

LMxx

ELASTIC FASTENING SLEEVES FOR FANS

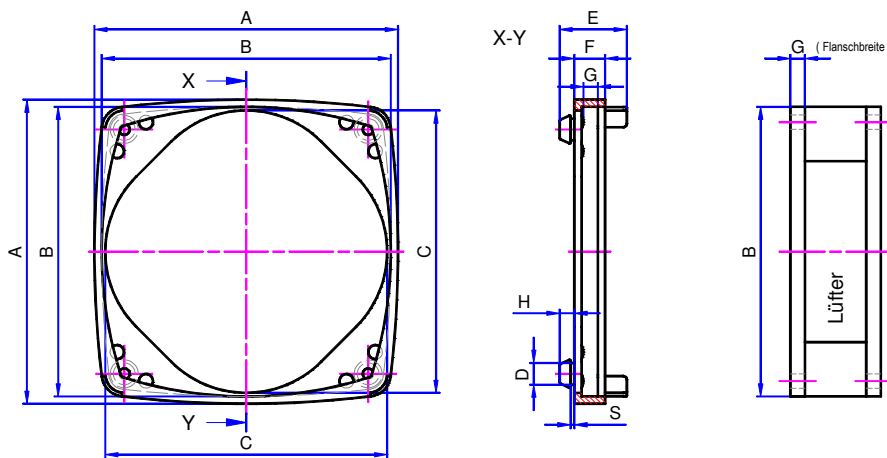


DESCRIPTION

Fixation for fans with mounting flange in standard dimension from 30x30mm to 119x119mm.

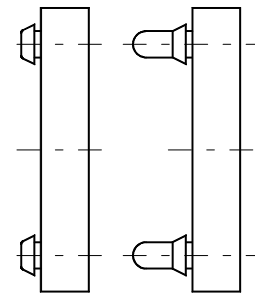
Material: TPE (Thermoplastic elastomeric), Color: black, hardness: approx. 65° Shore A, fire resistance: UL94-V-0

DIMENSION



OPTIONAL DESIGNS

LMXXX **SLMXXX**
Standard **on request**



Modell No.	A [mm]	B [mm]	C [mm]	D [mm]	E [mm]	F [mm]	G [mm]	H [mm]	S [mm]	Pale thickness
LM/SLM30C1	33	30	28	4.0	22.25	13.25	10.0	3.0	1.0	0.75 ... 1.25
LM/SLM30C2	33	30	28	4.0	23.25	13.25	10.0	4.0	2.0	1.5 ... 2.5
LM/SLM40A1	43	40	38	4.5	14.75	5.25	2.0	3.5	1.0	0.75 ... 1.25
LM/SLM40A2	43	40	38	4.5	15.75	5.25	2.0	4.5	2.0	1.5 ... 2.5
LM/SLM40C1	43	40	38	4.5	22.75	13.25	10.0	3.5	1.0	0.75 ... 1.25
LM/SLM40C2	43	40	38	4.5	23.75	13.25	10.0	4.5	2.0	1.5 ... 2.5
LM/SLM40D1	43	40	38	4.5	27.75	18.25	15.0	3.5	1.0	0.75 ... 1.25
LM/SLM40D2	43	40	38	4.5	28.75	18.25	15.0	4.5	2.0	1.5 ... 2.5
LM/SLM40E1	43	40	38	4.5	32.75	23.25	20.0	3.5	1.0	0.75 ... 1.25
LM/SLM40E2	43	40	38	4.5	33.75	23.25	20.0	4.5	2.0	1.5 ... 2.5
LM/SLM50C1	53	50	48	4.5	22.75	13.25	10.0	3.5	1.0	0.75 ... 1.25
LM/SLM50C2	53	50	48	4.5	23.75	13.25	10.0	4.5	2.0	1.5 ... 2.5
LM/SLM50D1	53	50	48	4.5	27.75	18.25	15.0	3.5	1.0	0.75 ... 1.25
LM/SLM50D2	53	50	48	4.5	28.75	18.25	15.0	4.5	2.0	1.5 ... 2.5
LM/SLM60A1(F)	64	60	58	5.0	17.5	7.5	3.0	4.0	1.0	0.75 ... 1.25
LM/SLM60A2(F)	64	60	58	5.0	18.5	7.5	3.0	5.0	2.0	1.5 ... 2.5
LM/SLM80A1(F)	84	80	77	5.8	18.5	8.5	4.0	4.0	1.0	0.75 ... 1.25
LM/SLM80A2(F)	84	80	77	5.8	19.5	8.5	4.0	5.0	2.0	1.5 ... 2.5
LM/SLM80B1(F)	84	80	77	5.8	20.5	9.5	5.0	4.0	1.0	0.75 ... 1.25
LM/SLM80B2(F)	84	80	77	5.8	21.5	9.5	5.0	5.0	2.0	1.5 ... 2.5
LM/SLM92A1(F)	97	92	89	6.0	19.5	9.5	4.0	4.0	1.0	0.75 ... 1.25
LM/SLM92A2(F)	97	92	89	6.0	20.5	9.5	4.0	5.0	2.0	1.5 ... 2.5
LM/SLM92B1(F)	97	92	89	6.0	21.5	10.5	5.0	4.0	1.0	0.75 ... 1.25
LM/SLM92B2(F)	97	92	89	6.0	22.5	10.5	5.0	5.0	2.0	1.5 ... 2.5
LM/SLM119A1(F)	125	119	116	8.0	22.0	9.5	4.0	4.5	1.0	0.75 ... 1.25
LM/SLM119A2(F)	125	119	116	8.0	23.0	9.5	4.0	5.5	2.0	1.5 ... 2.5
LM/SLM119B1(F)	125	119	116	8.0	24.0	10.5	5.0	4.5	1.0	0.75 ... 1.25
LM/SLM119B2(F)	125	119	116	8.0	25.0	10.5	5.0	5.5	2.0	1.5 ... 2.5
LM/SLM119C1(F)	125	119	116	8.0	26.0	11.5	6.0	4.5	1.0	0.75 ... 1.25
LM/SLM119C2(F)	125	119	116	8.0	27.0	11.5	6.0	5.5	2.0	1.5 ... 2.5

Technical changes without notice • 04/15

LMxx

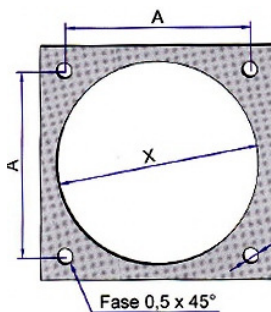
ELASTIC FASTENING SLEEVES FOR FANS



Mounting styles / Hole cut-outs

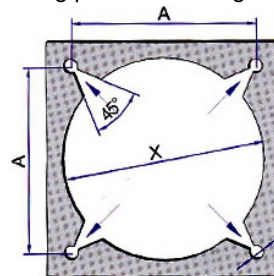
Recommended mounting styles / hole cut-outs and measure for mounting plates and housing walls.

Dependant on given space circumstances there are four possible ways to mount the elastic sleeves type LM. Only hole cut-out has to be used to install the sleeve on a mounting plate or housing wall.



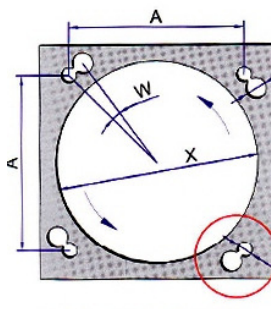
**Mounting style/
Hole cut-out 1
Plug-in mounting**

First pull the sleeve over the flange of the fan, then place the four pegs on the holes **B** of the mounting plate and pull them through from the back side.



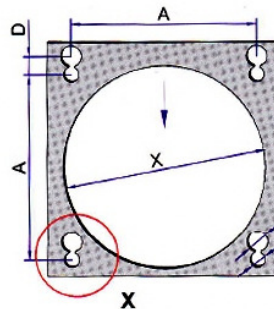
**Mounting style/
Hole cut-out 2
Plug-and-pull
mounting**

First place the four pegs through the 45° outbreak in the mounting plate and pull them out into the holes **C2**. Now put the fan into the sleeve and pull the corners over the flanges of the fan.



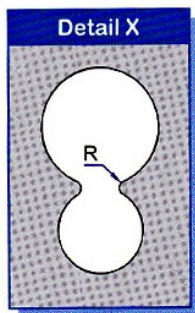
**Mounting style/
Hole cut-out 3
plug-and turn
mounting**

First pull the sleeve over the flange of the fan, then place the four pegs in the larger holes **C1** of the mounting plate and pull the pegs with a turn into the holes **C2**.



**Mounting style/
Hole cut-out 4
Plug-and-push
mounting**

First pull the sleeve over the flange of the fan, then place the four pegs in the larger holes **C1** of the mounting plate and push the pegs down into the holes **C2**.



!! Please Note !!

By adjusting the size D/W and the size of radius R the resistance to mount and remount the fan with

Mounting style / Hole cut-out 1

Is preferable when there is limited space around the fan. Please note! You need space at the back side to pull out the pegs.

Mounting style / Hole cut-out 2

Is recommend, when the space around the fan allows to pull the sleeve over the fan flanges. You don't need access to the back side.

Mounting style / Hole cut-out 3/4

Are the quickest ways to attach the fans provided sufficient space is available to pull or turn the sleeve and fan. Access to the back side is not necessary.

We are always available for consultation should you have any question regarding the appropriate mounting style / hole cut-out and mounting procedure.

*** Attention ! 50 mm fans have depending on manufacturer 40 or 42 mm hole distance.**

Hole cut-out dimensions	A [mm]	B [mm]	C1 [mm]	C2 [mm]	D [mm]	R [mm]	W [°]	X
For LM30xx	24.0	4.5	5.5	4.0	5.0	0.5...1.0	16.5°	Form / dimensions dependent on fan manufacturer
For LM40xx	32.0	5.0	6.5	4.5	5.75	0.5...1.0	14.5°	
For LM50xx	40.0/42.0*	5.0	6.5	4.5	5.75	0.5...1.0	11.0°	
For LM60xx	50.0	5.5	7.5	5.0	6.5	0.5...1.0	10.5°	
For LM80xx	71.5	6.5	8.0	6.0	7.0	0.5...1.0	8.0°	
For LM92xx	82.5	6.5	8.5	6.0	7.25	0.5...1.0	7.0°	
For LM119xx	105.0	8.5	11.0	8.0	9.5	1.0...2.0	7.0°	

Technical changes without notice • 04/15